

NTT DATA Center Sibiu

ONE OF THE MOST MODERN BUILDINGS IN SIBIU

Central Location

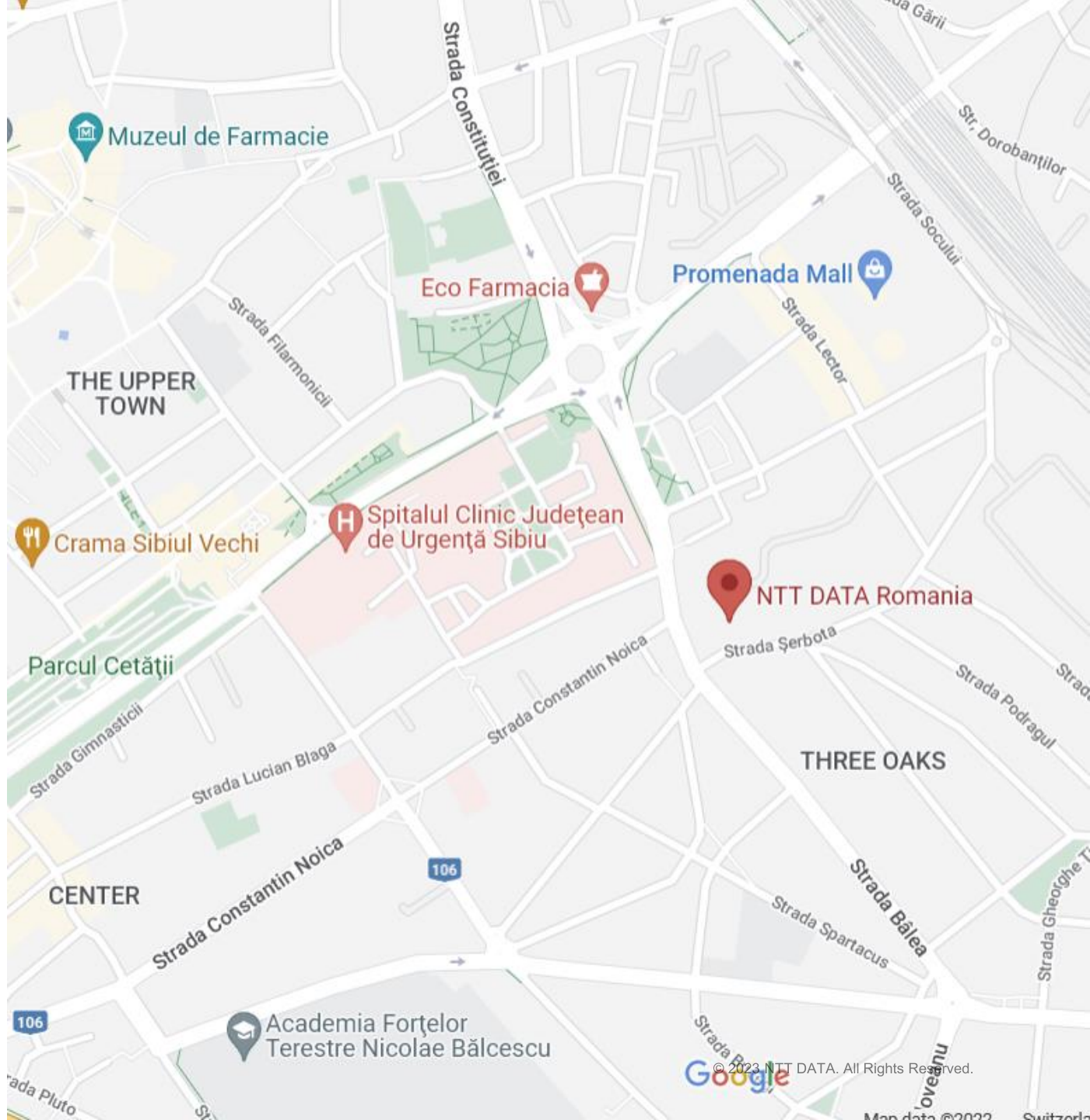
Nearby:

- 300m Promenada Sibiu
- 1.3km Historical Centre
- 600m Sibiu County Hospital
- 950m MedLife Polisano Clinic
- 200m Transmixt bus station - 7 min walk



17 min ride from the airport
Easy access from the highway

NTT DATA Center Sibiu
1A Serbota Street
550247, Sibiu



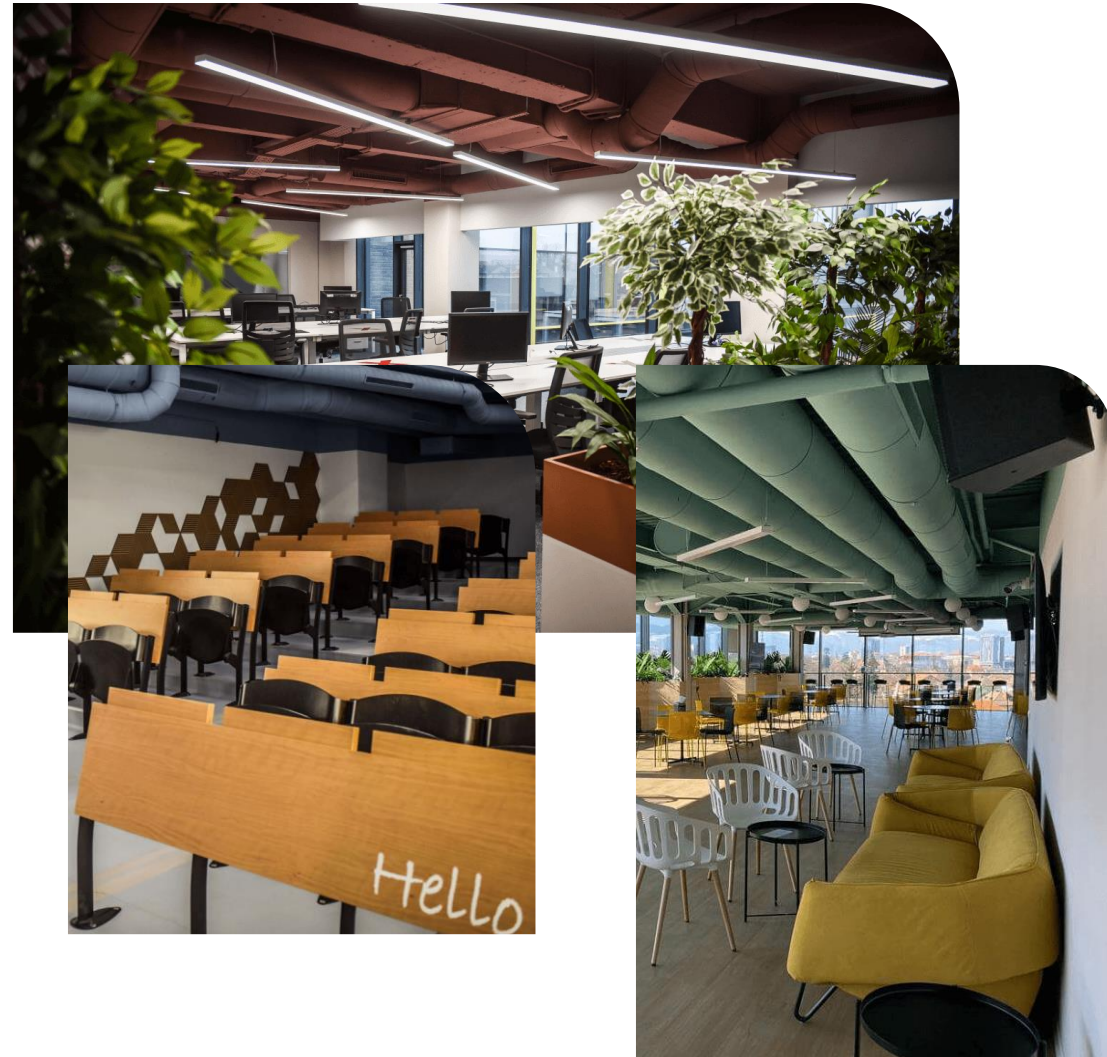


High-End Space with Top Facilities

- Class A space with modern fit out and furnishing
- Daikin ventilation system
- LED lighting (350 - 500 Lux)
- Technological floor
- Industrial apparent ceiling
- 4 Schindler class A elevators
- Fully equipped toilets and kitchens
- Large glazed areas, natural lighting
- Glass compartments and window blinds
- Interior design by Morphoza.com
- Operational furniture made in Italy
- Overground parking with 300 parking spaces
- Parking spaces for electric vehicles and bikes

Diverse Range of Amenities

- Amphitheatre
- Classrooms
- Meeting rooms
- Open spaces
- Dedicated management offices
- Fitness & recreation area
- Meditation rooms
- Common dining area
- Doctor's office



Top Services and Top Conditions



Central Location



24/7 Security Services



300 Parking Spaces and
Charging Stations



400kVA Power
Generator



Dedicated Building
Manager



Dedicated Anti-Aircraft
Shelter



Easybox Delivery
Self-Service



700 sqm of Open View
Terraces



Large Vehicle Access



Reach Your Fitness Goals

900 sqm gym with professional equipment in partnership with Barzz, a certified fitness company

- Open 24/7
- Personal training
- Top notch equipment
- Fully digitalized access



6th Floor	Cafeteria Flavours
5th Floor	Open for rent
4th Floor	Open for rent
3rd Floor	Endava
2nd Floor	NTT DATA Romania
1st Floor	NTT DATA Romania
Ground Floor	Concierge&CEC Bank
-1 Floor	Gaming Area; Amphitheatre; Meditation Rooms; Classrooms
-2 Floor	Parking access; Fitness area; Amphitheatre; Doctor's office



CONCIERGE

Ground floor

HOW DO YOU WANT TO GROW?

Define Your Vision
Identify Key Objectives
Develop a Strategic Plan
Allocate Resources
Monitor Progress
Adjust as Needed

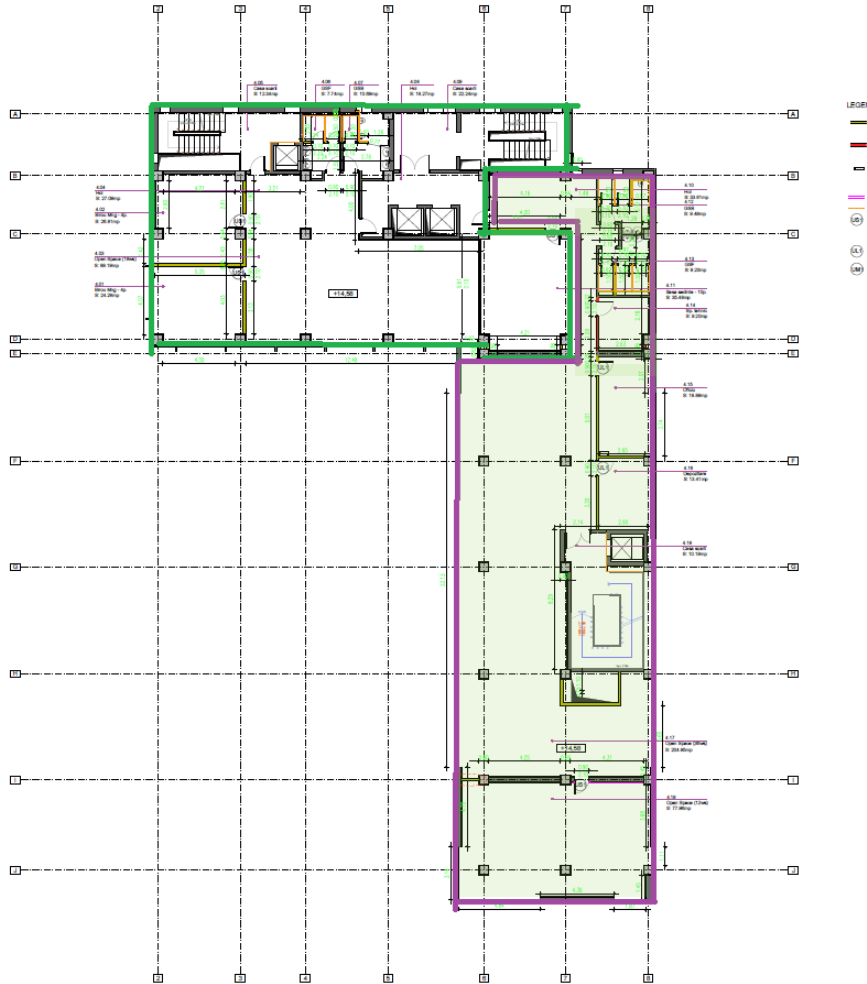
How are you going to get there?



OPEN FOR RENT


4th Floor

OPEN FOR RENT



4th Floor

Open for rent - right wing- purple area

 Available area for rent 420.64 m²
purple area

 Office space

 50 operational desks

Rooms & workspaces

Open space area

1 bathroom

1 kitchen

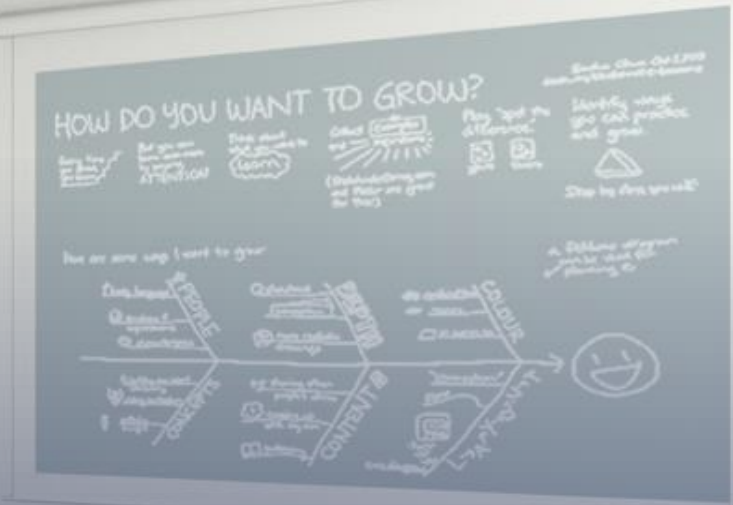
1 technical room

1 storage room

4

OPEN FOR RENT

5th Floor






OPEN FOR RENT

5th Floor

Open for rent

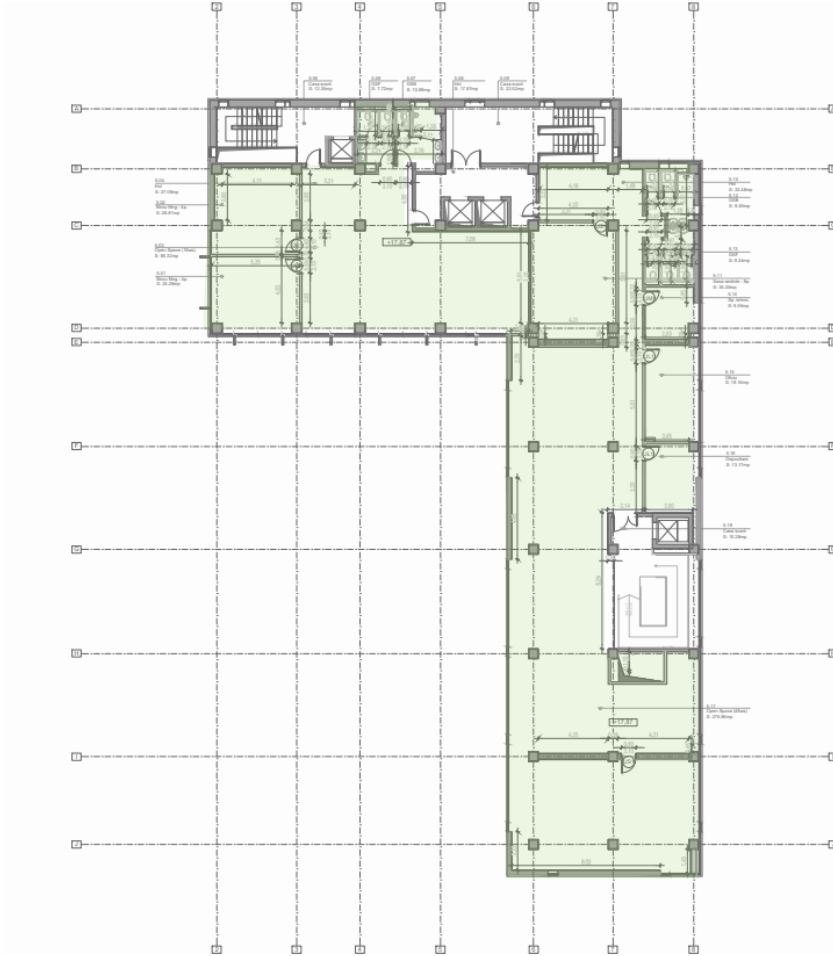
 Total area 661.15 m²

 Office space

 74 operational desks

Rooms & workspaces

- Open space areas
- 2 management offices
- 1 meeting room
- 2 bathrooms
- 1 kitchen
- 1 technical room
- 1 storage room



Selected Photos







Thank you!

Start Virtual Tour →

Oana Zdroba
Real Estate Manager
oana.zdroba@emeal.nttdata.com
+40 747 060 075

Cantemir Mihiu
Site Manager Sibiu
cantemir.mihu@emeal.nttdata.com
+40 749 068 372